

EpiMax 777UHD **CLEAR**



High Performance Seal Coat System

Description

EpiMax 777UHD High Performance Seal Coat System is a two component water based polyurethane coating that provides long-term protection to internal concrete. This EpiMax product family has demonstrated proven service in concrete floor protection in a variety of retail, commercial & industrial flooring projects for more than 15 years.

This latest development offers further advances in terms of general performance and durability.

EpiMax 777UHD is ideal as a scuff resistant clear protection system for ground concrete floors. If unprotected, these floors are easily stained or damaged by spills of even everyday substances such as foods, wines, sauces etc because their chemistry can harm the floor concrete by dissolving the cement paste and calcareous aggregates. More aggressive chemicals cause faster damage. Once a concrete floor starts to deteriorate, it can lose lustre and primary function and then dusting and cleaning difficulties begin.

This system is also suitable as a clear, scuff resistant, seal coat to other EpiMax clear or solid colour flooring systems to provide a professional surface finish.

EpiMax 777UHD is available as a standard hardening clear version in gloss and matt finishes.

EpiMax recommends that the prepared surfaces are primed first with EpiMax 999WB Concrete Protective Sealer first. Alternatively, prime first with EpiMax 777 Interprime. Note a second coat of EpiMax 777UHD will be required in this instance. Coloured versions are also available for direct-to-concrete coloured finish applications to enhance presentation and performance. Refer separate Technical Data Sheet.

Advantages

- Hazmat free/non flammable
- Non yellowing behind glass
- Application by roller or airless spray
- Excellent scuff resistance
- Meets GBCA Low VOC standard
- Meets BCA CRF Fire standard
- Water based formulation
- Gloss or Matt
- Good adhesion
- Excellent durability
- Meets HB198 to P3 with suitable media
- Good stain resistance

Typical applications

Retail, commercial, industrial and residential flooring

- Grind and seal applications
- Polished concrete overlay sealer
- Decorative cement micro topping sealer
- Honed concrete sealer
- Self leveling floor topping sealer

Typical properties

- Shelf life: 12 months
- Recoat: 6 - 48 hours standard
- Typical application rate: 10m² - 12m²/L
- Work time: 60 minutes at 25°C
- Volume solids content: 45 - 50% (varies with water addition)
- Mix ratio: EpiMax 777UHD 4 volumes Part A : 1 volume Part B
- Mix ratio: EpiMax 777 Interprime 6 volumes Part A : 1 volume Part B
- Full cure: 7 days

Estimating data

14 ltr EpiMax 777 Interprime Clear Prime Coat System = 140 m²/coat

9 ltr EpiMax 777UHD Clear Seal Coat System = 90 m²/coat

18 ltr EpiMax 777UHD Clear Seal Coat System = 180 m²/coat

General surface preparation

Concrete should be at least 28 days old. Ensure it is clean, dry and free of additives, curing agents, oils, etc.

Prepare as necessary by professional diamond grinding.

Allow to dry if wet. Always confirm preparation adequacy.

Surface profile should exceed CSP 2.



General application comments

Note: internal applications only. Apply in well ventilated areas. Read SDS before use, taking note of Engineering Controls and PPE requirements. Not suitable for use in garages, car parks or automotive showrooms.

The hardening mechanism is two stage. Firstly the contained water evaporates and then the chemical hardening takes place. Good air flow will always assist the water evaporation stage. Work time may be difficult to visually determine, so always keep track of actual time.

When a matt finish is required, the first coat should be gloss.

Review the sub-floor area in advance so that a fixed volume of mixed material can be applied over a fixed area to ensure correct application rate. Select a slow speed (400 rpm) mechanical mixer and ensure thorough mixing. Add EpiMax 777UHD Part B to EpiMax 777UHD Part A. Mix for a minimum of 3 minutes. To adjust the viscosity of the first coat, use up to 20% potable water as required. Apply in an even coat over the prepared surface at 10 - 12m² per litre. When using the Matt finish, premix Part A thoroughly to ensure all of the matting agent is dispersed evenly to avoid variations in the finish.

EpiMax 777UHD can be applied by roller or airless spray. Allow the coating to cure for 7 days prior to subjecting to full exposure. Slip resistance can be enhanced by incorporating suitable non-slip media into the first or second coat.

Wet edge time is affected by temperature and air flow. Higher temperatures and airflow will decrease wet edge times.

Discard unused material when the work time is exceeded (60 minutes at 25°C). Work time may be difficult to visually determine, so always keep track of actual time.

Avoid application when RH is >80% and temperature is <12°C.

Ground concrete applications

Diamond-segmented abrasives are used to grind concrete surfaces to the desired degree of grind and smoothness. Eventually, "grinding" gives way to "polishing". Gradual progression is made from coarser diamonds to finer diamonds. The result, after possible surface grouting, is a glossy, mirror-like finish that will require protection for enhanced durability. Note that, in general, film forming coatings are used with concrete finishes below 120 grit metal-bonded diamonds and penetrants above 120 grit metal-bonded diamonds.

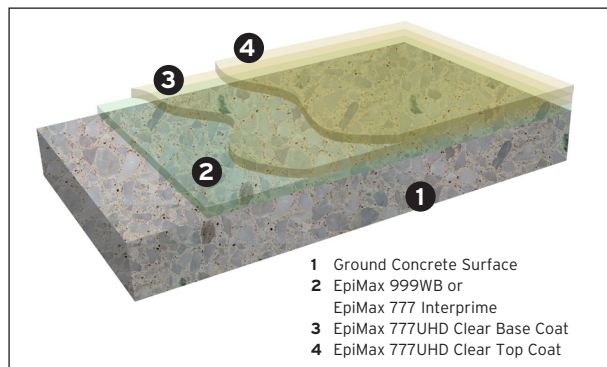
This is because film forming coatings require a degree of surface profile and penetration to adequately bond to the concrete surface.

EpiMax 777UHD should be used with concrete surfaces with a finish below the 120 grit metal-bonded diamond level. Allow surfaces to dry if wet. Always consider slip factor functional requirements and confirm preparation adequacy.

Prime the area using EpiMax 777 Interprime or EpiMax 777UHD Gloss diluted with 20% potable water. When a matt finish is required, the first coat should be EpiMax 777 Interprime or EpiMax 777UHD gloss, alternatively use EpiMax 999WB as the prime coat.

The second coat of EpiMax 777UHD is applied at a rate of 10 - 12m² per litre.

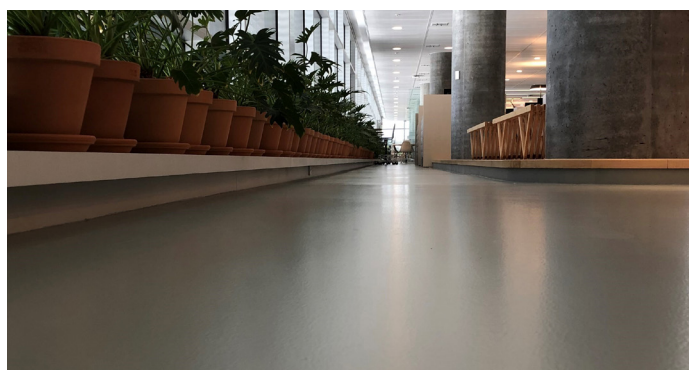
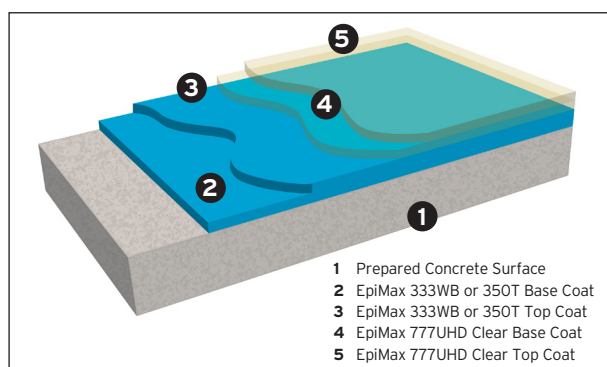
A third coat of EpiMax 777UHD may be applied at a rate of 10 - 12m² per litre, to provide extended durability.



Over-coating applications

When over-coating previously applied EpiMax coatings, ensure the surfaces are clean, dry and free of any contamination and less than two days old.

Apply EpiMax 777UHD Clear in two coats at 10m² per litre.



Packaging

EpiMax 777UHD Gloss and Matt is available as a stock line in clear. It is available in 9 litre and 18 litre packs (includes Part A, Part B). It is pre-packed in correct proportions for use. EpiMax Interprime is available in 14 litre packs.

Safety precautions

Read **Safety Data Sheet** before commencing any application. Keep away from children. Avoid contact with skin and avoid breathing vapour. Always provide adequate personal protection (gloves & goggles etc) during use. Always provide adequate ventilation, especially in confined spaces. If poisoning occurs, call Doctor or Poisons Information Centre. Phone 13 11 26. If swallowed, DO NOT induce vomiting. Give plenty of water or milk. If skin contact occurs, quickly remove contaminated clothing and wash affected areas thoroughly with soap and water.

TDG Code: Part A - Not Classified, Part B - Not Classified

This Technical Data Sheet is provided for general information and instruction only. The properties and characteristics set out herein represent typical testing results using industry test methods under laboratory conditions. Results of actual product characteristics may vary slightly. Site-specific and project-specific conditions may affect product performance, including without limitation: surfaces, environmental conditions, contact conditions, storage conditions, storage timeframes, weather, and climatic or seasonal conditions. Not all product parameters are batch tested as part of the manufacturing quality control process, and performance may vary between batches.

If EpiMax gives any express written product warranty in relation to the product, that warranty is subject to the foregoing qualifications, despite anything to the contrary in any other document. All other representations, advice, suggestions or promises regarding the product's performance or its implementation, whether verbal or in writing, and whenever given, including in the course of any field services, are expressly disclaimed. Without limiting the foregoing, EpiMax will have no liability for loss or damage of any kind if any application specifications are not followed.

The foregoing is not intended to exclude any warranties or guarantees which by law cannot be excluded. Subject only to the foregoing provisions of this Notice, and to the extent permitted by law, EpiMax disclaims all liability for loss or damage of any kind suffered as a result of or in connection with the product or its implementation. If such liability cannot be wholly excluded, the liability of EpiMax will, to the extent permitted by law, be limited to the replacement of the product itself or the direct cost of replacement of the product itself (not including any collateral or consequential loss or damage of any kind).



EpiMax Technologies Pty Ltd

Sydney • Melbourne • Brisbane • Townsville • Canberra • Perth
Australia 1300 721 522 info@epimax.com.au

